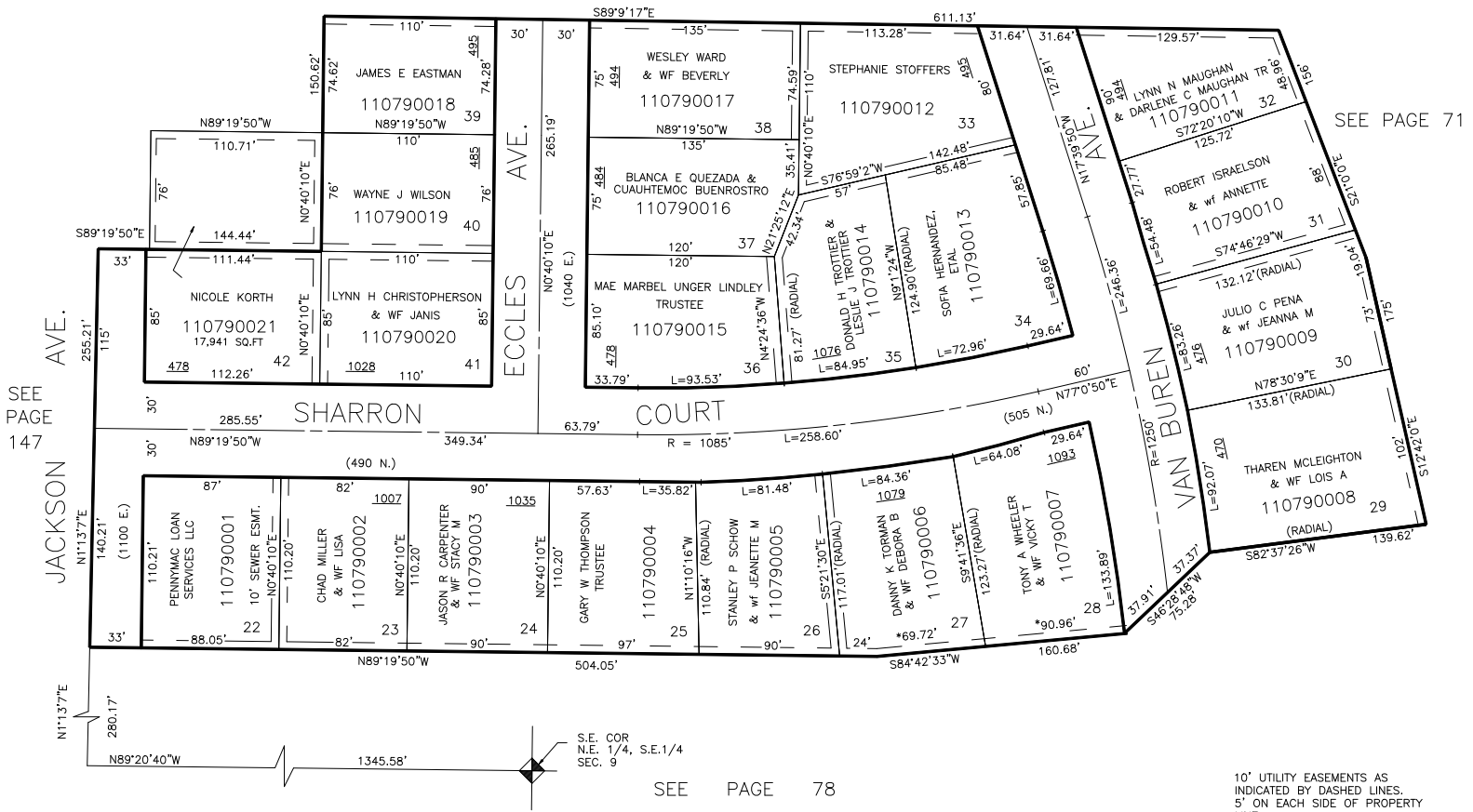


PART OF S.E. 1/4 OF SECTION 9, T.6N., R.1W., S.L.B. & M  
MOUNTAIN CREST SUBDIVISION NO. 2

IN OGDEN CITY  
SCALE 1" = 60'

TAXING UNIT: 25

SEE PAGE 153



SEE PAGE 71

SEE PAGE 78

10' UTILITY EASEMENTS AS INDICATED BY DASHED LINES. 5' ON EACH SIDE OF PROPERTY LINE.

\*SEE CORRECTION AFFIDAVIT BOOK 989, PAGE 770

FOR COMPLETE ENG DATA SEE ORIGINAL DEDICATION PLAT IN BOOK 15, PAGE 12 OF RECORDS.